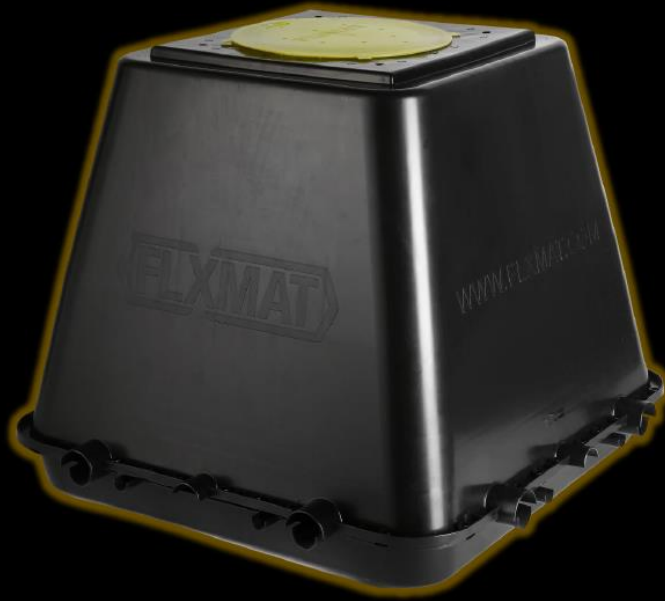
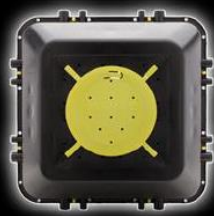




CONCRETE MATTRESS SYSTEMS

- Stabilisation
- Dropped Object Protection
- Scour & Erosion Control
- Cathodic Protection Systems



**MODEL : LB400 SPECIFICATIONS**

BLOCK HEIGHT	400 mm
BLOCK LENGTH	500 mm
BLOCK WIDTH	500 mm
BLOCK VOLUME	0.0625 m <sup>3</sup>
CONCRETE – Volume/Sq.m	0.250 m <sup>3</sup>
WEIGHT –In Air using Concrete Density: 2400 kg/m <sup>3</sup>	600 kg/m <sup>2</sup>
WEIGHT – Submerged using seawater Density: 1027 kg/m <sup>3</sup>	344 kg/m <sup>2</sup>

**LIFTING AND STRUCTURAL ROPE**

- 4No. ropes per concrete block.
- Lift ropes can be provided on 1, 2 or 4 sides of the mattress.
- Rope diameter selection by FLXMAT™ based on DNV-OS-H205 Lifting Operations.
- Maximum rope diameter is 24mm.

FLXMAT XSERIES offers a range of fully articulating concrete mattresses suitable for Stabilisation, Scour & Erosion Control, Dropped Object and Cathodic Protection.

FLXMAT – Only Limited By Imagination

WWW.FLXMAT.COM